



Presses

Air Operated Bench Press

Air operated bench presses offer economy and efficiency for pressing operations in assembly lines for transforming, joining and other assembly operations that require forces from a few pounds to tons of force.

They reduce the cost of both implementation and actual production in your assembly and pressing operations. These small compact presses are ideal when precision matters for your crimping, bending, forming, pressing, swaging, riveting and burnishing or any other task that may require the use of small pneumatic presses for your production floor.

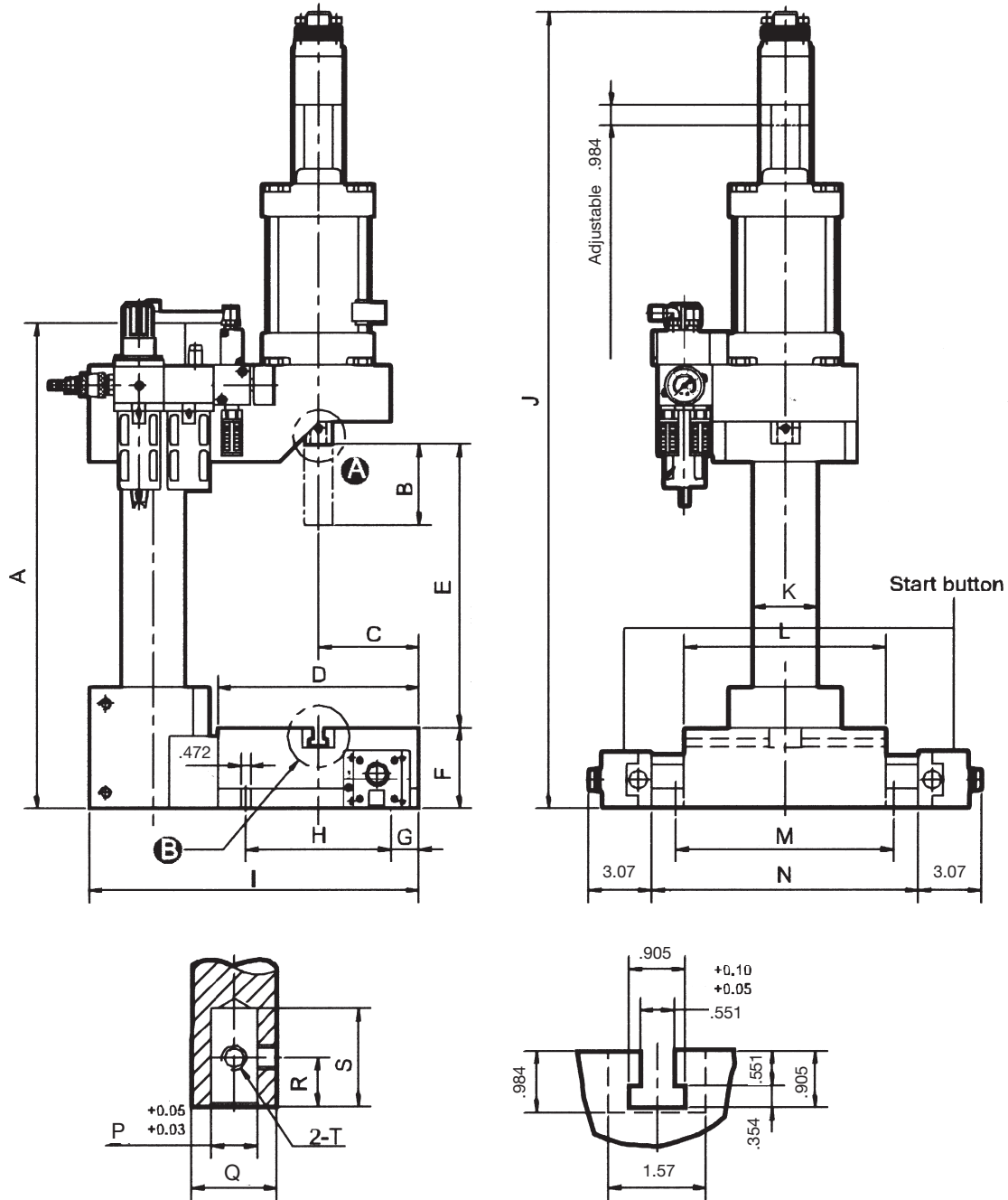
Standard Features:

- Easy hook-up — just attach to your shop air supply
- Heavy duty cast iron frame and t-slotted base ensure precision work
- Non-rotating double acting ram eliminates guide pins on most tooling
- Chrome plated piston rod resists rust and ensures long operating life
- Polyurethane rod wiper protects cylinders from dust and contaminants
- Air filter / regulator ensures clean and continuous air flow to press
- Easily adjusted ram speed, pressure and stroke allow accurate control of ram movement
- Easy change over to different tool and part heights via height adjustment crank
- Pre-drilled and counterbored hole in end of ram with two locking screws for easy and secure tool mounting
- Two hand safety circuitry — equipped with dual-palm push start buttons that require both to be engaged before the ram will move and cannot be mechanically by-passed



Specifications

Model #	RAM Travel/ Max. (inch)	Max Work Height (inch)	Table Area (inch)	Cylinder Bore (inch)	Cylinder Stroke/max. (inch)	Adjustable Cylinder Stroke (inch)	Operating Pressure (PSI)	Theoretical Output (in lbs.) at:			
								57 PSI	71 PSI	85 PSI	100 PSI
9661600	6.299	7.874	5.905 x 5.905	2.480	2.953	0.984	57-100	247	309	371	433
9661602	6.299	7.874	7.087 x 7.874	3.937	3.937	0.984	57-100	649	811	974	1136
9661604	7.087	13.78	9.843 x 9.843	5.905	3.937	0.984	57-100	1479	1848	2218	2588



Drawing Specifications

Model #	A	B	C	D	E	F	G	H	I	J (Max.)	K	L	M	N	P	Q	R	S	T (Max.)
9661600	14.17	2.95	3.15	5.90	7.87-4.92	3.15	1.38	3.15	9.05	23.62	1.58	5.90	6.38	7.48	.630	.984	.590	1.18	.50
9661602	15.75	3.94	3.94	7.87	7.87-3.94	3.15	.984	5.90	13.58	30.70	2.36	7.09	8.27	9.05	.630	1.18	.787	1.58	.50
9661604	23.62	3.94	4.92	9.84	13.78-9.84	3.94	1.38	7.09	16.14	39.21	3.15	9.84	10.63	12.99	.984	1.58	.787	1.58	.50

Air Over Hydraulic “C” Frame Bench Press

For high speed, low cost operation our C frame presses are compact, affordable and fully self-contained benchtop gap framed presses. They are suitable for applications that require a uniform pressing load throughout the stroke making them the ideal choice to handle a wide variety of operations as assembly presses, blanking presses, coining presses, forming presses, punching presses, riveting or staking presses. Heavy duty frame construction that resists deflection and maintain better parallelism than most other designs.

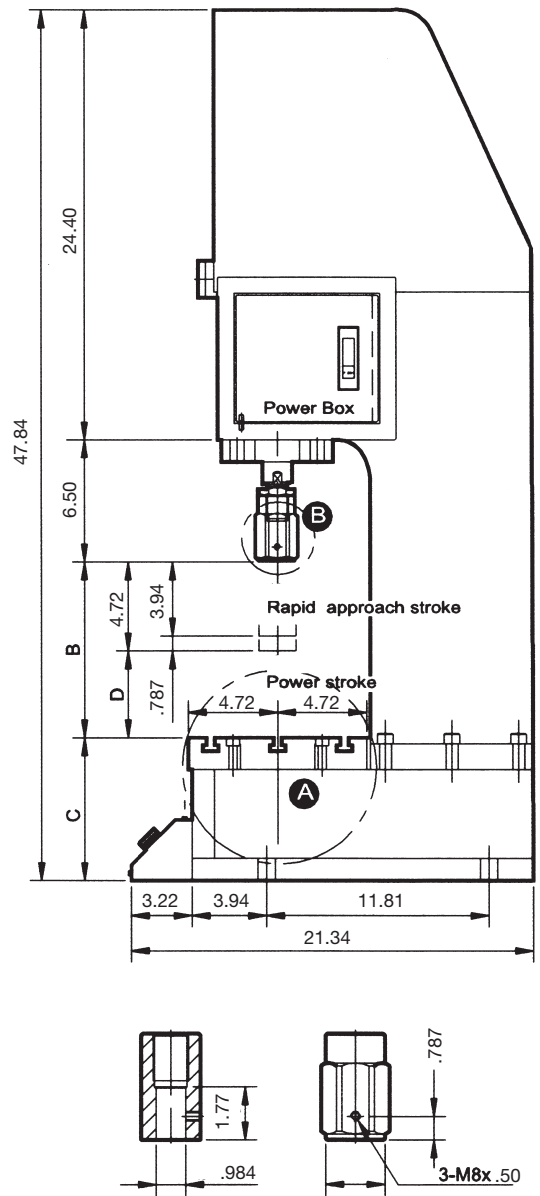
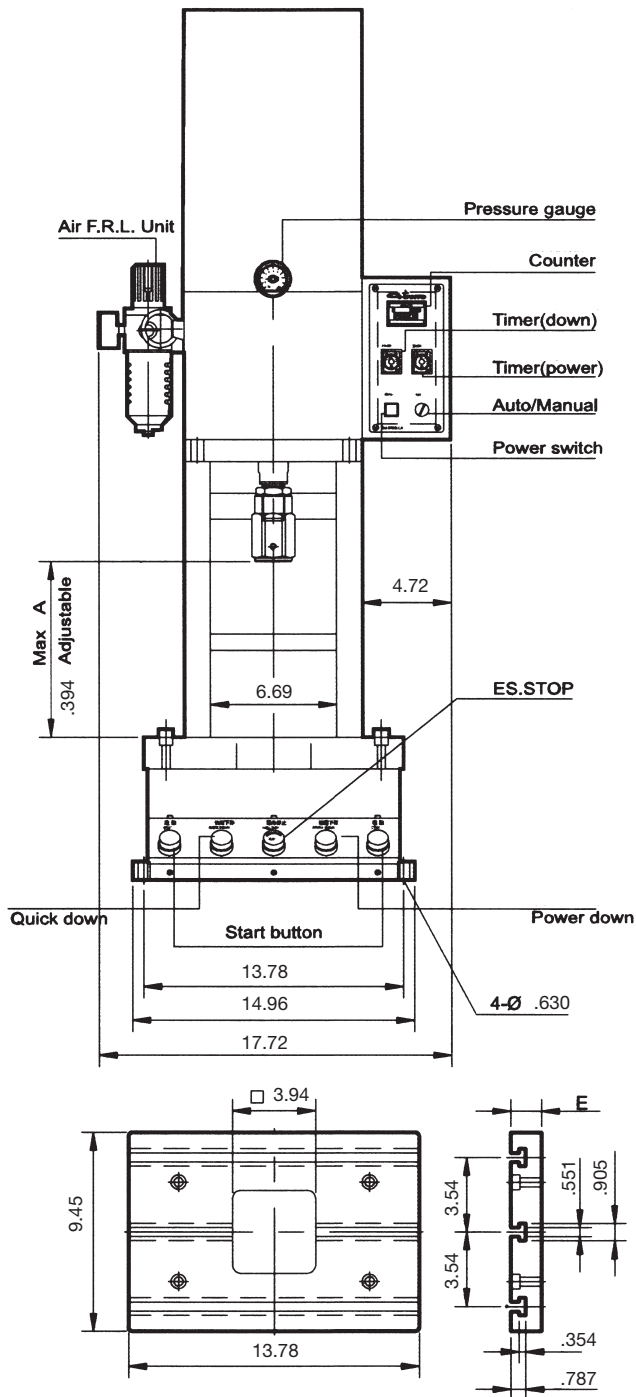
Standard Features:

- Heavy duty cast iron frame ensures precision work
- Frame design optimizes strength plus provides a smaller foot print while delivering a larger work area making it ideal for production line applications
- Open frame allows unlimited part length both front to rear and side to side
- Ground t-slotted cast iron table makes the mounting of fixtures quick and easy
- Hydro-Pneumatic operation ideal for short, medium or high production applications
- Front mounted pressure gauge
- Remote pressure adjustment easily sets maximum pressure desired
- A two post guided tool plate to simplify your tooling connection and to support the ram ensuring accuracy and a stable ram movement
- Manual ram operation — rapid approach, power or pressing stroke, ram return all adjustable permitting accurate control of ram movement
- Standard ram end utilizes coupler with bored hole and two locking screws for easy and secure tool mounting
- Resettable parts counter
- Electric timer to automate the interval between the ram’s power stroke and return stroke for production applications
- Two hand safety circuitry — equipped with dual push start buttons that require both to be engaged before the ram will move and cannot be mechanically by-passed



Specifications

Model #	Max. Work Height (inch)	Rapid Approach Stroke (inch)	Power Stroke (inch)	Stroke Cycles/minute	Table Area (inch)	Power for Counter & Electric Auto Cycle	Operating Pressure (PSI)	Theoretical Output (in lbs.) at:			
								57 PSI	71 PSI	85 PSI	100 PSI
9661606	9.645	1.969-3.937	0.182-.0787	20	9.45 x 13.78	110/220V	57-100	5660	7089	8489	9900
9661608	9.45	1.969-3.937	0.182-.0787	20	9.45 x 13.78	110/220V	57-100	13,825	17,287	20,727	24,188



Drawing Specifications

Model #	A	B	C	D	E
9661606	9.65	9.25-9.65	7.28	4.92	1.38
9661608	9.45	9.05-9.45	7.60	4.72	1.69

Arbor Presses

Delivers the heavy force needed for riveting, squeezing, punching, bending, and other pressing applications. Removable machined steel anvil provides accurate work support in four slot positions. Depth stop securely clamps to the ram and withstands full pressure. A lockable fine adjustment adjusting screw accurately limits the depth of the ram stroke.

Punches or tools may be added to the end of the ram with the aid of a magnetic insert. The ram is reversible with one end solid and the other end with a hole and magnet to hold bits and tools.

Standard Features:

- Sturdy, cast-iron construction
- Rugged steel ram is driven by a machined pinion
- Base drilled for mounting on a bench or pedestal
- Includes three piece bit set — 1 pointed, 1 round and 1 square end bit, and a removable steel anvil
- The base is machined to hold the three bit set



Three piece bit set standard on all Arbor Presses



Depth Stop standard on all Arbor Presses



9661101 is equipped with a handwheel to perform light and quick press work



9661051



9661101



9661201



9661301



9661401

Specifications

Model #	Force (ton)	Lever Ratio	Swing	Anvil Diameter	Max. Work Height	Ram Dimensions	Height	Base Dimensions	Weight
9661051	0.5	18.1:1	6-1/2"	3-1/2"	4-5/8"	3/4" x 3/4"	9-1/4"	5-1/8" x 9-5/16"	19 lbs.
9661101	1.0	18.0:1	8"	4-7/16"	6"	1" x 1"	11"	6-1/8" x 10-9/16"	34 lbs.
9661201	2.0	19.0:1	10-3/8"	6-3/4"	7-7/8"	1-1/4" x 1-1/4"	15-1/8"	8" x 16"	70 lbs.
9661301	3.0	16.9:1	11-3/4"	6-3/4"	12-1/2"	1-1/2" x 1-1/2"	21-1/2"	9-1/2" x 17-3/4"	135 lbs.
9661401	4.0	25.7:1	16-7/8"	9-3/4"	15-3/8"	1-3/4" x 1-3/4"	27-1/8"	10-3/4" x 21"	207 lbs.

Racheting Arbor Press

The arm provides optimal leverage position with consistent application of force. In addition, it has more clearance over the table for broaching or pressing large items. It is counterweighted for rapid handle return.

Removable machined steel anvil has four slot positions. A lockable adjusting screw accurately limits the depth of the ram stroke.

The steel ram is reversible with one end solid and the other end with a hole and magnet to hold bits and tools.

Standard Features:

- Sturdy, cast-iron construction
- Rugged steel ram is driven by a machined pinion
- Base drilled for mounting on a bench or pedestal
- Includes three piece bit set — 1 pointed, 1 round and 1 square end bit, and a removable steel anvil
- The base is machined to hold the three bit set



Specifications

Model #	Force (ton)	Lever Ratio	Swing	Anvil Diameter	Max. Work Height	Ram Dimensions	Height	Base Dimensions	Weight
9661302	3.0	38.6:1	13-3/4"	8"	17-3/4"	1-1/4" x 1-1/4"	27-3/4"	10" x 21-3/8"	230 lbs.

Arbor Press Stand

The Arbor Press Stand provides a sturdy base and optimal height for easy operation. It has a slot on the top for pieces which need to extend below the base of the press table.

- Stand comes with built-in cup for catching expressed pieces
- Base and top are cast iron with a body of welded steel
- Fits all 2, 3 and 4 ton presses

Specifications

Model #	Top Dimension	Base Dimension	Height	Weight
9670103	11-3/4" x 21-15/16"	11-15/16 x 22-3/16"	36"	88 lbs.





C.H. Hanson

2000 N. Aurora Road

Naperville, IL 60563

Phone: 800-827-3398

Fax: 800-827-5834

E-Mail: sales@chhanson.com

www.chhanson.com

www.palmgren.com